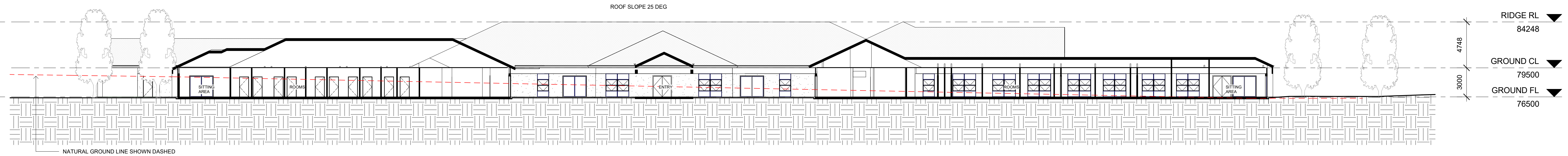
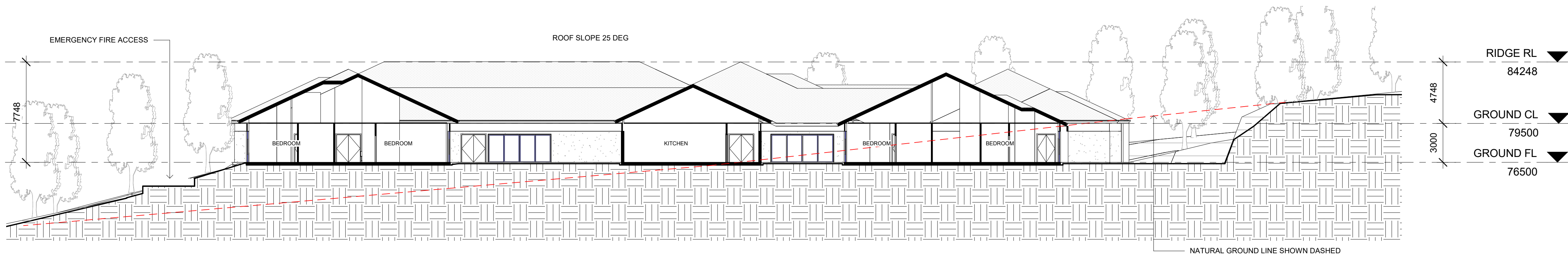


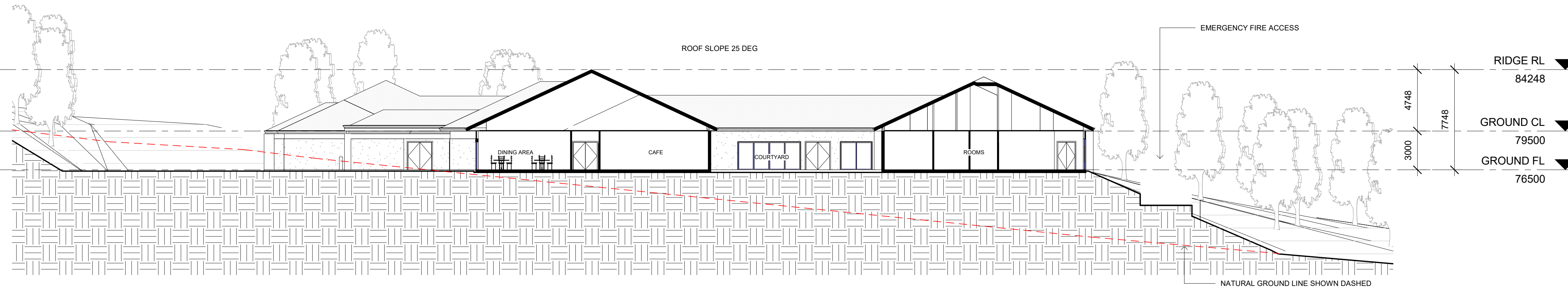
A SECTION A
1 : 200



B SECTION B
1 : 200



C SECTION C
1 : 200



D SECTION D
1 : 200

FINISHES SCHEDULE

AF - ALUMINIUM FRAMED SLIDING WINDOWS - WOODLAND GREY
AFA - ALUMINIUM FRAMED AWNING WINDOWS- WOODLAND GREY
AFSD - ALUMINIUM FRAMED SLIDING DOOR - WOODLAND GREY

TR - CONCRETE TILED ROOF - BORAL LINEA CHARCOAL GREY OXIDE
TF - NATURAL TIMBER FINISH - WEATHERTEX

PF1 - PAINT FINISH BROADWALL AND AC SHEETING - LIGHT GREY
PF2 - PAINT FINISH RENDER SURROUND AND AC SHEETING PORCH COCHRE- WHITE
PF3 - PAINT FINISH FASCIA BOARD AND GUTTER - CHARCOAL GREY

CONSTRUCTION NOTES

GROUND FLOOR TO BE CONCRETE TO ENGINEERS DETAILS WITH STEEL FRAMED EXTERNAL WALLS AND ROOF STRUCTURE.
EXTERNAL WALLS TO BE HEBEL, 90MM PANEL CLAD TO WINDOW HEAD HEIGHT WITH VILLABOARD WITH METAL FLASHING TO SUIT OVER
INTERNAL WALLS TO BE GYPROCK LINED HEBEL

A	09.05.2017	DEVELOPMENT APPLICATION SET
NO.	DATE:	DETAILS:

Amendments:

Stephen Jones Associates

p. 02 9977 2240
m. 0418 866 784
e. sj@stephenjonesassociates.com
w. www.stephenjonesassociates.com

Registered Architect Gary Finn No. 5774 (NSW)

Project:
SENIORS LIVING DEVELOPMENT
LOT 1, DP 780801
WINDWARD WAY MILTON, NSW 2538

Drawing:
RESIDENTIAL CARE FACILITY
SECTIONS

Scale: 1:200 @A1 Job No: 15.16 Drawing No:

Date: 09.05.2017
Drawn: SJ

DA22

This drawing is copyright and must not be retained, copied or used without consent of designer.